



HYUNDAI

NEW THINKING.
NEW POSSIBILITIES.

SONATA



* Picture model: 2.4i Premium.
Pictures are for illustration purpose only. Actual unit may differ.



Only available for 2.4l Premium



Only available for 2.4l Premium
Optional upgrade for 2.0l Executive



INSPIRED BY NATURE

Influences are all around us.
We absorb them, then we create.

What could be more compelling than taking your design cue from the orchid? Refined and elegant, the pure contours and effortless grace of this most precious of creations were the natural inspiration for the Hyundai Sonata. With its gently undulating silhouette and distinctive, sweeping character lines, this is automotive design distilled down to fluid, innate beauty. And as with all successful design concepts, nothing is superfluous. Looking, touching, driving, you know you're in the presence of something unique.

STREAM OF THOUGHT

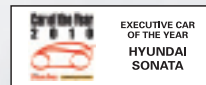
Consider the curvaceous outline of the Sonata.
Reflect on the way it expresses dynamic motion so effortlessly.
Then, switch off your mind and let your heart take over.



Watch the Sonata in motion!
Just scan the QR code with your smartphone.



Live Life Drive Car of the Year



Executive Car of the Year



Pictures are for illustration purpose only. Actual unit may differ.

STREAMLINED AESTHETICS

Its serene shape cutting the air, aerodynamics define the fluidity.



Pictures are for illustration purpose only. Actual unit may differ.

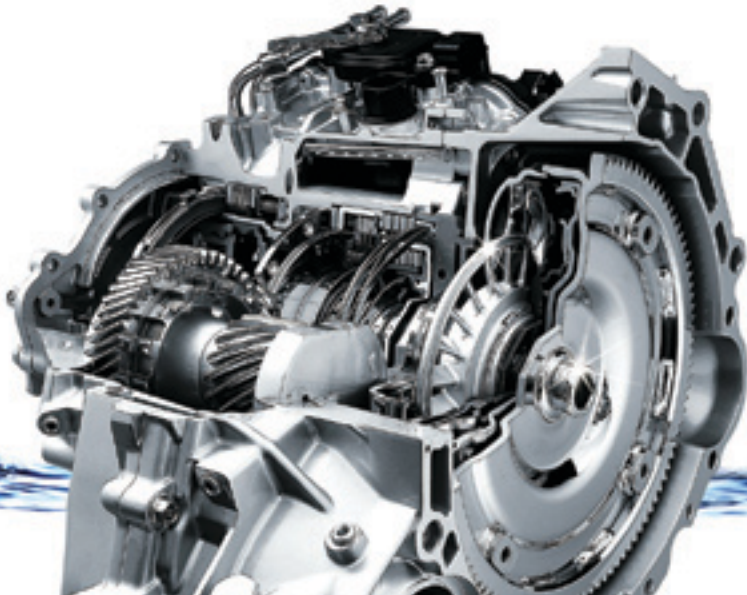
PURE TECHNOLOGY

With purity of thinking and purity of style
comes purity of technology.

With purity of thinking and purity of style comes purity of technology.

The Sonata embodies Hyundai's commitment to protecting the environment. At 141 grams* per kilogram of carbon dioxide, its CO2 emission levels match those of a family hatchback, as does its fuel economy. On the dashboard is an ECO Drive indicator, a device that reminds you to adopt more fuel - efficient, economical driving habits. Meanwhile, an efficient catalytic converter reduces air pollution by converting harmful emissions into harmless ones. And because a light car burns less fuel, light weight materials are used throughout its construction.

* По 2.0 MPI 6 - speed automatic





YF-1301

Pictures are for illustration purpose only. Actual unit may differ.

ENGINEERING PASSION CONCEIVED FOR THE FUTURE

Future journeys, future destinations. Designing for the complete driving experience means considering every angle.

The Sonata's engineers have taken the very latest technical thinking and put it to use on all fronts, to deliver consummate performance, comfort and handling. Lowered overall height and minimum ground clearance not only enhance the car's profile, they also provide improved aerodynamics, delivering increased fuel efficiency in the process.



Luxury Family Cars



GATE-TYPE 6-SPEED A/T

Never miss another shift. The step-gate shift pattern of the 6-speed automatic transmission, together with the secure, grippy feel of the shift lever, means you have less likelihood of engaging the wrong gear.



PIU 2.0L & THETA II 2.4L MPI ENGINE

PIU 2.0L or THETA II 2.4L MPI petrol engines provide measured, powerful performance. Plus low emissions, reduced fuel consumption thanks to lowered weight, and minimised vibration, particularly when idling and accelerating.



ASD (AMPLITUDE SELECTIVE DAMPER)

This works by varying the car's shock absorption capabilities, to increase stability and comfort. Driving on a smooth, well-maintained road or a bumpy, uneven one, a comfortable ride and steady handling are preserved.

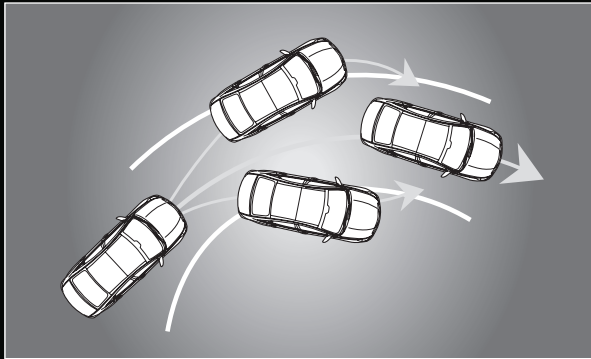
Pictures are for illustration purpose only. Actual unit may differ.



STREAM OF SEDUCTION

A stance of refined performance. Waiting for you to take the wheel. Captivating you with the promise of movement.

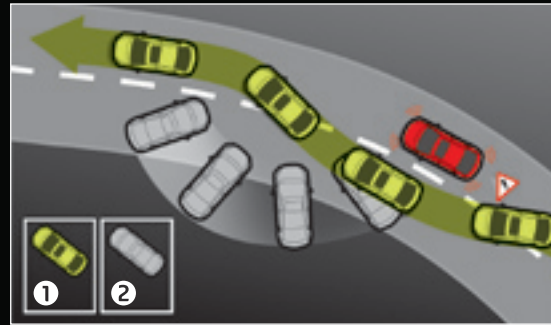
Pictures are for illustration purpose only. Actual unit may differ.



ESP (ELECTRONIC STABILITY PROGRAMME)*

The ESP features an engine control unit that receives input from individual wheel speed sensors, yaw sensors and steering angle sensor. It applies the brakes on individual wheels to help make the vehicle easier to control in precarious and close situations.

Operational Premise



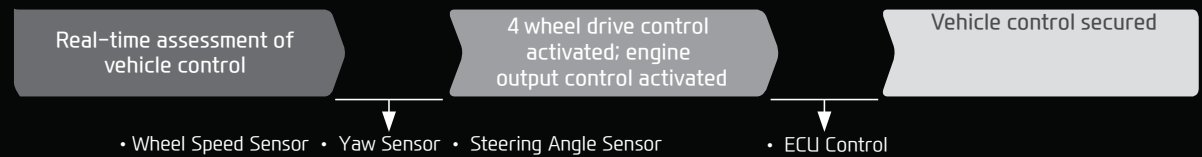
1 Vehicles with ESP

System recognises unusual manoeuvres such as sudden braking or sharp turns, initiating split-second braking control over individual wheels and automatically reducing engine speed when needed thus avoiding spinouts and crashes.

2 Vehicles without ESP

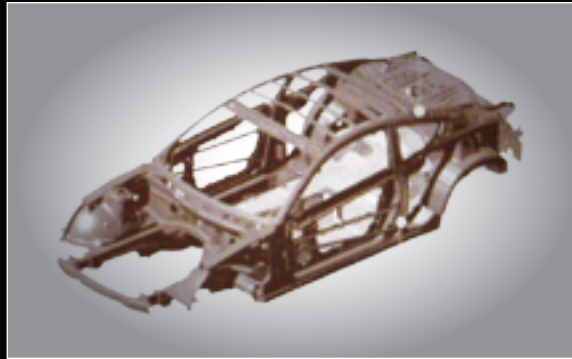
If driver initiates a sudden turning manoeuvre, or panic braking, then the vehicle risks spinning out of control and possibly crashing.

Control Process



PASSIVE SAFETY (AIRBAG)**

A total of 6 airbags are built in. They include full-length curtain airbags, the front and sides, and side airbags for the rear seat passengers.



HOT STAMPING METHOD

Hot Stamping is a method that rapidly cools the material that has been heated to more than 900 degrees Celsius while being pressed, resulting in a material that is three times stronger than unprocessed material.



HILL-START ASSIST CONTROL*

Prevents vehicle from slipping backwards for up to 2 seconds after the brakes are released.

BRAKE ASSIST SYSTEMS*

Senses the speed of the brake pedal depression and automatically increases brake fluid pressure to provide maximum braking power.

* Only available for all models except 2.0i Elegance.

** Only available for 2.4i Premium

Pictures are for illustration purpose only. Actual unit may differ.



HYUNDAI | NEW THINKING.
NEW POSSIBILITIES.

1300-13-2000

24/7 Roadside Assist

* Refer to the Hyundai Safe Drive 24/7 Roadside Assist Programme leaflet for more details regarding this programme.



Pictures are for illustration purpose only. Actual unit may differ.



SEE IT. FEEL IT.

Take a seat in the Sonata and you feel all the jog of driving coming through.

The x-shaped centre fascia is what registers first. Sweeping and ergonomic, it tells you that simplicity is all part of the package, with well-positioned controls and a logical layout enhanced by no small measure of style. The supervision cluster gives you the information you need in one glance. The floor console features a cup holder compartment with a sliding cover. A guide adjusts to the size of any cup to hold it safely, while the cover makes for a neat appearance when not in use.



ENGINE START / STOP BUTTON

Convenience every time you start the engine. An easy way to begin your journeys, with no need to turn a key, you just push the button.



ORGAN - TYPE ACCELERATOR PEDAL

As you accelerate smoothly, your foot and ankle travel in the same trajectory as the pedal itself, harmonising with the natural movement of your leg and adding comfort to your driving.



PADDLE SHIFTERS*

Paddle shifters located just behind the steering wheel let you change gear without taking your hands off the wheel. Though electronic transmission, you shift up and down with fingertip control.

* Only available for 2.4t Premium.

Pictures are for illustration purpose only. Actual unit may differ.

WHERE IT ALL HAPPENS

Precision at your fingertips.
Relaxed ambience all around you.

Inside, you're immersed in a flowing continuation of the car's seductive appeal. Generously proportioned, you have plenty of space to enjoy the comfort.

The overhead lighting system features room lamps and front seat reading lights. And to add a musical aspect to your journeys, a premium CD/radio stereo system, with MP3 functionality, means your favourite sounds can reach your ears wherever you go.



POWER ADJUSTABLE SEAT*

Lets you find your ideal driving position quickly and easily. Height, rake, lean and forwards and backwards positioning are at the touch of a button.



DELUXE CENTRE ARMREST

Multi-box access opens to different compartments providing a place for everything from CDs to other small items.



REAR AIR VENTILATION

Passengers in the rear seats can benefit from fresh air too. Fully adjustable, the air jet housing blend smoothly into the sculpted form of the trim.



DUAL FULL AUTO AIR CONDITIONING**

Just set the desired temperature and let the system take care of the rest – ensuring a customised interior climate that is comfortable and cozy for everyone on board.

* Driver 8-way Power Seat available in all models except 2.0i Elegance.
Passenger 4-way Power Seat only available for 2.4i Premium.
** Only available for 2.4i Premium.



YF-1301

Pictures are for illustration purpose only. Actual unit may differ.

THE FINER POINTS

Diverse elements come together in a consolidated, harmonious design.



HID Lamps**

At night, light the road in front of you in the optimum way with sleeker, cat-eye shaped HID headlamps.



LED positioning & Fog Lamps**

Extra visibility means extra safety. When blended into the curves of the bodywork, it means extra style as well.



LED outside mirror repeaters

LED lamps on the wing mirrors, smoothly integrated into the surface of the housing, mean enhanced visibility when turning.



Wrap-around LED rear lights

Where the side meets the rear, safety meets style. Energy-saving LED illumination, for increased visibility day and night.



Panoramic Sunroof*

Enjoy sunny mornings & serene moonlight evenings at the touch of a button.

AND THE METICULOUS DETAILS

An interior fine-tuned with everything you could wish for.



iPod®, AUX and USB port

Lets you plug in a mobile device and play your favorite tunes from compressed music files.

iPod® is a registered trademark of Apple, Inc.



Smart key

Allows the driver to keep the car key in his pocket when unlocking and starting the vehicle.



Active headrest

In the event of a rear-end collision, active headrests channel the force of the driver and passenger's size and weight into motion.



Audio visual navigation***

Sonata offers GPS, DVD, reverse camera and full connectivity for the most popular types of personal music players, as well as mobile phones.



ECO driving system

A coloured ECO lamp on the dashboard reminds the driver to adopt more fuel efficient and economical driving habits.

* Available for all models except 2.0i Elegance.

** Only available for 2.4i Premium.

*** Only available for 2.4i Premium and optional upgrade for 2.0i Executive.

Pictures are for illustration purpose only. Actual unit may differ.

RANGE COMPARISON



Sonata 2.0L Dual CVT Elegance

Exterior

- 17" alloy wheels
- Projector Halogen Lamps
- Fog lamps
- Electric folding mirrors
- Auto light

Interior

- Leather seats
- Smart key + engine start / stop button
- Active headrest
- Tilt and telescopic steering
- Steering wheel audio control
- Foot brake
- Audio with iPod AUX in
- Manual air con
- Air con rear duct
- Glove box key lock
- Safety auto up window
- Auto cruise

Safety

- 2 airbags
- ABS with EBD
- MacPherson Strut front suspension
- Multi-link rear suspension
- Amplitude Selective Damper (ASD)



Sonata 2.0L Dual CVT Executive

Exterior

- 17" alloy wheels
- Projector Halogen Lamps
- Fog lamps
- Panoramic sunroof
- Electric folding mirrors
- Auto light

Interior

- Leather seats
- Front driver power seat
- Smart key + engine start / stop button
- Active headrest
- Tilt and telescopic steering
- Steering wheel audio control
- Foot brake
- Audio with iPod AUX in
- Manual air con
- Air con rear duct
- Glove box key lock
- Safety auto up window
- Auto cruise

Safety

- 2 airbags
- ABS with EBD
- ESP with HAC
- MacPherson Strut front suspension
- Multi-link rear suspension
- Amplitude Selective Damper (ASD)

Optional Upgrade

2.0L Executive Plus

- Audio Visual Navigator*



Sonata 2.4L Dual CVT Premium

Exterior

- 18" alloy wheels
- HID lights
- LED positioning & fog lamps
- Panoramic sunroof
- Electric folding mirrors
- Auto light

Interior

- Leather seats
- Front driver & passenger power seats
- Smart key + engine start / stop button
- Active headrest
- Tilt and telescopic steering
- Steering wheel audio control
- Foot brake
- Audio Visual Navigator*
- Dual full auto air conditioning
- Air con rear duct
- Glove box key lock
- Safety auto up window
- Paddle shifters control

Safety

- Passive safety (Airbag)
- ABS with EBD
- ESP with HAC
- MacPherson Strut front suspension
- Multi-link rear suspension
- Amplitude Selective Damper (ASD) with Sport Suspension

* Includes GPS, DVD, Reverse Camera, Visual Display & Bluetooth. (GPS optional upgrade with plus package)

Pictures are for illustration purpose only. Actual unit may differ.

EXTERIOR COLOURS



White Crystal WHC



Hyper Silver FHM



Sleek Silver Y5



Remington Red RER



Black Diamond AA

SPECIFICATIONS

TYPE	Nu 2.0		Theta II 2.4
	Elegance	Executive	Premium
Engine			
Displacement	1999cc		2359cc
Block / Head Composition	Aluminium		
Max Power	162 ps (120 kW) @ 6500rpm		178 ps (131 kW) @ 6000rpm
Max Torque	19.8 kg.m (194 Nm) @ 4800rpm		23.3 kg.m (228 Nm) @ 4000rpm
Bore x Stroke (mm)	81 x 97		88 x 97
Compression Ratio	10.3		10.5
Cam Type	DOHC		
Valve System	Dual CVVT, 16 Valves Direct Acting with Mechanical Lash Adjuster		
Transmission			
Type	6 Speed with SHIFTRONIC™		
Reverse	3.385		
Final	3.367		3.064
Paddle Shifter	Nil		Std
Suspension			
Front	MacPherson Strut		
Rear	Multi-Link		
ASD / Amplitude Selective Damper	Std		With Sport Suspension
Wheels & Tyres			
Wheels	Alloy 17"		Alloy 18"
Tyres	215 / 55 R 17		225 / 45 R 18
Safety			
Airbags	2 Airbags		6 Airbags
ABS with EBD			Std
ESP with HAC	Nil		Std

Interior			
Seat	Leather		
Power Seat, Front	Nil	Driver Only	Driver & Passenger
Active Headrest	Std		
Steering Wheel	Tilt and Telescopic		
Steering Wheel Audio Control	Std		
Parking Brake	Foot Brake		
Convenience			
Smart Key + Engine Start / Stop Button	Std		
Audio with iPod AUX in	Std		
Air Con	Manual	Dual Full Auto Air Conditioning	
Air Con Rear Duct	Std		
GPS**	Nil	Std	
Glove Box Key Lock	Std		
Window	Safety Auto Up		
Cruise Control	Std		
Auto Light	Std		
Exterior			
Lighting	Projector Halogen Lamp		HID
Fog Lamp	Front		LED positioning & Fog Lamp
Panoramic Sunroof	Nil	Std	
Electric Folding Mirror	Std		

* Specifications and car shown are subject to change and may differ from those shown in the brochure.
** GPS optional with plus package.

DIMENSIONS

unit:mm





Help is at hand with the FREE 24/7 Roadside Assist*. Designed to provide protection to Hyundai owners in case of accidents, vehicle breakdown, parts malfunction or even a flat tyre. Roadside Assist will provide you with assistance needed, covering on-site repair or towing services. Here we present you the ultimate freedom to roam with peace of mind like never before. Terms & conditions apply.

* Refer to 24/7 Roadside Assists leaflet for details.



Discover the world. Be thrilled that the Sonata is assured up to 300,000km or 5 years, whichever is earlier, an exclusive warranty for all Hyundai users. That means you can drive up to 164 kilometres a day for 5 years and know that your Sonata is taken care of. You can even choose to drive across the globe up to 7 times! Our bold testament is a testimony of Hyundai's faith in our vehicles.

NEW THINKING. NEW POSSIBILITIES.

People's expectation towards individual mobility requires more than just a convenient means of transportation. The old understanding of cars has become outdated. A car represents individuals' lifestyles, and it became an integral part of their lives. At the same time, the automobile industry has experienced seismic change. Hyundai Motor Company has grown rapidly to become one of the largest automakers, backed by world class production capability and superior quality. We have now reached a point where we need a qualitative approach to bring bigger ideas and relevant solutions to our customers. This is an opportunity to move forward and we have developed a new brand slogan that encapsulates our willingness to take a big leap. Led by our new slogan and the new thinking underlying it, we will become a company that keeps challenging itself to unlock new possibilities for people and the planet.

Hyundai-Sime Darby Motors
www.hyundai.com.my
Customer Careline / 24-7 Roadside Assist
1300-13-2000
 Hyundai Malaysia

